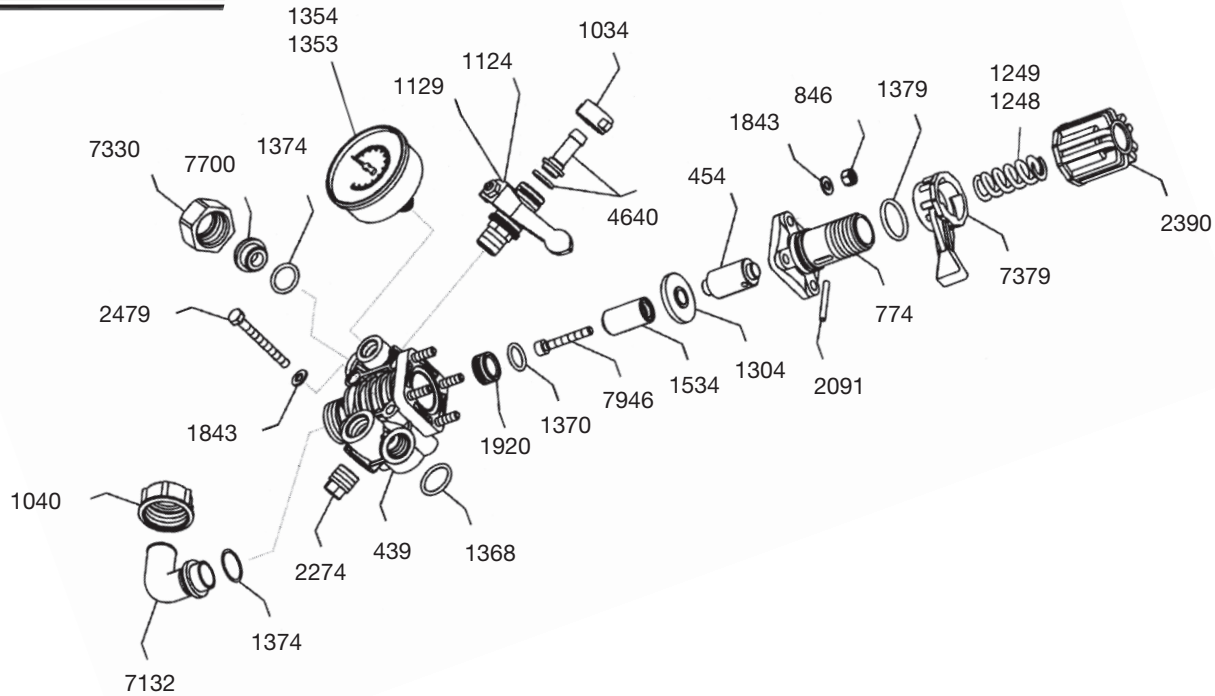




# 6010.93 & 6010.95 Control Unit

## Operating Instructions and Parts List



REF#	PART#	DESCRIPTION	QTY	REF#	PART#	DESCRIPTION	QTY
439	0204.69	Body	1	*1374	1101.12	O-Ring	2
454	0205.19	Cylinder	1	*1379	1101.23	O-Ring	1
774	0204.70	Body	1	*1534	1204.31	Poppet	1
846	0303.02	Nut	4	1843	1403.07	Washer	6
1034	0604.09	Barb Nut	2	*1920	1501.50	Seat	1
1040	0604.26	Bypass Barb Nut	1	2091	1512.10	Pin	1
1124	0608.45	Ball Valve-Right	1	2274	1603.44	Plug	1
1129	0608.46	Ball Valve-Left	1	2390	1801.32	Adjustment Knob	1
1248	0901.71	Spring (560 PSI)	1	2479	1804.74	Bolt	2
1249	0901.73	Spring (300 PSI)	1	4640	0202.19	1/2" Hose Barb	2
*1304	0903.26	Diaphragm	1	7132	0254.04	Bypass Hose Barb	1
1353	GG-1000BM	Gauge	1	7330	0604.29	Nut	1
1354	GG-350BM	Gauge	1	7379	0803.21	Lever	1
*1368	1101.04	O-Ring	1	7700	1603.22	Plug	1
*1370	1101.06	O-Ring	1	*7946	1810.03	S.S. Bolt	1

\* Parts Included in Repair Kit - #6062.A9. **Note:** 6062.A9 is the only repair kit to be used in this control unit.

### OPERATING INSTRUCTIONS

The control unit features a manual dump valve, pressure control knob, glycerine filled pressure gauge, and two ball valve discharge ports.

1. Before operating or re-operating the pump move lever (Ref. #7379) to the dump position (Right) so the pump will start at zero pressure. FAILURE TO DO SO WILL VOID THE PUMP WARRANTY.
2. Turn pressure adjustment knob (Ref. #2390) counter clockwise to relieve spring tension. This step only applies to the initial start up and is not necessary in daily operation of pump.
3. Start unit and let run until air is evacuated from the system.
4. Move lever (Ref. #7379) to the pressure position (Left) open spray gun or spray boom and turn the pressure adjustment knob (Ref. #2390) clockwise until desired operating pressure is achieved.

### PROTECT PUMP FROM FREEZING.

**If freezing conditions exist, flush pump with a 50/50 mixture of antifreeze and water.**